

# HB24-1223: DEPENDABLE, AFFORDABLE CHILD CARE FOR WORKING PARENTS



## FAMILY-FRIENDLY PRACTICES TO IMPROVE THE COLORADO CHILD CARE ASSISTANCE PROGRAM

**SPONSORS: REPRESENTATIVES GARCIA AND WILLFORD, SENATOR CUTTER**

Right now, too many parents who want to work and provide for their families cannot because they don't have access to affordable, quality child care. Colorado families drive our economy and are the foundation of our economic and social well-being.

By **streamlining** and **strengthening** an accurate eligibility process for the Colorado Child Care Assistance Program, **Colorado will open the door to stronger support for families, thriving small businesses, and healthy communities.**

## WHAT WILL HB24-1223 ACCOMPLISH?

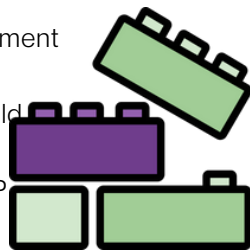
**HB24-1223 will create a streamlined, accurate process** for eligible parents to apply for CCCAP that **reduces administrative burdens for the state and counties.** It will also stabilize Colorado's child care infrastructure with **updated payment models.**

### PROTECTS PARENT AND CHILD PRIVACY



- Collects only information that is necessary to accurately determine eligibility and related verification documents are collected at the initial eligibility inquiry and redetermination;
- Removes the requirement that parents submit their child's immunization records to the county during the eligibility determination, which complies with Colorado child care provider licensing standards.
- Protects parent and child custody agreements from being scrutinized by county employees during the eligibility process.
- Asks parents who their child care provider of choice is after eligibility determination.
- Enhances the parent and provider experience.

- Bases CCCAP reimbursement on enrollment to keep child care programs open.
- Lessens the burden on home-based child care providers to become licensed.
- Establishes a uniform statewide CCCAP application process
- Explores a statewide payment model that could better support parents and providers



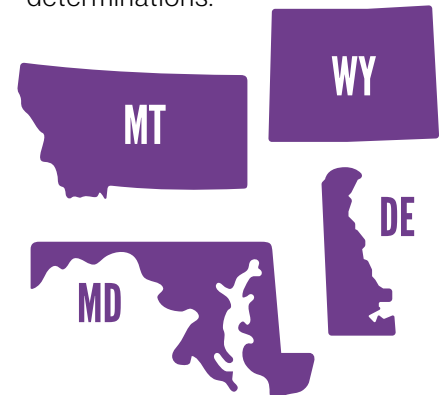
### STABILIZE COLORADO'S CHILD CARE INFRASTRUCTURE

**FACT:** Presumptive eligibility will maintain eligibility for parents based on information collected during the initial eligibility determination. **Montana, Delaware, Maryland, and Wyoming** have instituted this with little to no wrongful eligibility determinations.

### KEEPS PARENTS WORKING AND HEALTHY



- Sets presumptive eligibility criteria and verification standards after a family has submitted their initial application so families can access care faster and when they need it.
- Includes presumptive eligibility for teen parents who are going to school.
- Ensures kids who have parents receiving substance use treatment have access to safe, quality child care.
- Requires an accurate verification process to confirm presumptive eligibility to be no more than 90 days.



# WHAT IS THE COLORADO CHILD CARE ASSISTANCE PROGRAM?



**CCCAP** provides child care assistance to low-income parents who are:

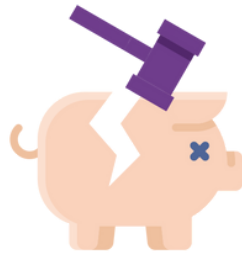
- Working,
- Starting a job for the first time,
- Searching for employment,
- Attending a job training program, or
- Going to college to advance their career

“ Kids, parents, and our economy are all struggling due to inadequate access to child care—and small businesses are taking a particular hit. ½ of all small business owners name childcare access and cost a top issue. ”

—THE MAIN STREET ALLIANCE

## COLORADO PARENTS AND SMALL BUSINESSES NEED A STABLE, AFFORDABLE CHILD CARE SYSTEM

- Businesses **lose \$23 billion annually** due to insufficient child care infrastructures.
- Low-income families **spend 35% of their income on child care**, while their higher-income peers spend 7%.
- Families **lose \$78 billion in earnings** and job search expenses each year due to not having access to child care.



- Almost **2/3 of parents** of infants and toddlers report being late for work or leaving work early because of issues with **insufficient child care**.

- Overall, **85%** of primary caregivers said **problems with child care hurt their work productivity** or time commitment at work.

## RURAL COLORADO SUFFERS FROM CHILD CARE DESERTS

Rural areas are **disproportionately likely to lack sufficient child care**. That adds additional challenges for parents and small

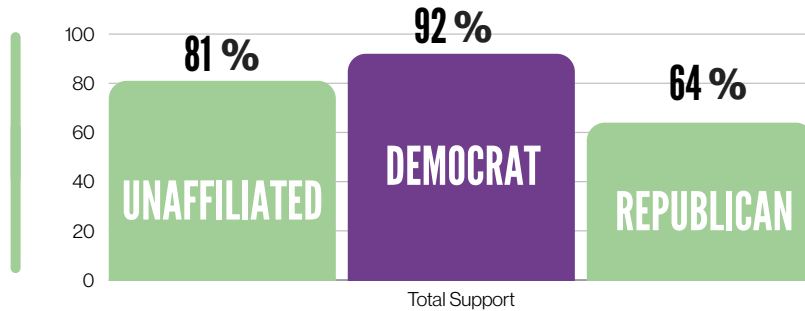
- Nearly **40%** of Colorado parents in Jefferson County reported that **lack of child care has prevented them from seeking employment or education opportunities** in the past 12 months.

businesses in these areas, which already struggle to attract investment and hire and retain employees.

## COLORADO VOTERS SUPPORT HB24-1223

**84%**

of Colorado voters believe affordable **child care is crucial** in allowing parents to grow their careers



**8 out of 10 voters** support a state law that makes the application process easier for the Colorado Child Care Assistance Program

## SUPPORTERS OF HB24-1223

- Healthier Colorado
- Colorado Statewide Parent Coalition
- Clayton Early Learning
- Bell Policy Center
- Early Childhood Options
- BCDI-Colorado
- Mile High Early Learning
- The Arc of Colorado
- Spring Institute for Intercultural Learning
- The Women’s Foundation of Colorado
- Nourish Colorado
- Grand Beginnings
- Parent Possible
- Wildflower Schools
- Illuminate Colorado
- Save the Children Action Network
- Colorado Children’s Campaign
- Council for a Strong America
- Small Business Majority
- The Early Childhood Partnership of Adams County
- Early Childhood Council Leadership Alliance
- Early Childhood Council Leadership Association
- Colorado Executives Partnering to Invest in Children
- Colorado Association of Family Child Care (CA FCC)

**CONTACT:** Christina Walker  
Susanna Mizer

[cwalker@healthiercolorado.org](mailto:cwalker@healthiercolorado.org)  
[susanna@bbmk.com](mailto:susanna@bbmk.com)

**(440) 223 - 1907**  
**(970) 690 - 8164**