



ECPAC
EARLY CHILDHOOD
PARTNERSHIP
OF ADAMS COUNTY

STORIES OF IMPACT: *Systems Work*

Stories of Impact was developed to discover and share the results of early childhood efforts in Adams County. This edition explores how partnering together leads to better outcomes through systems work.

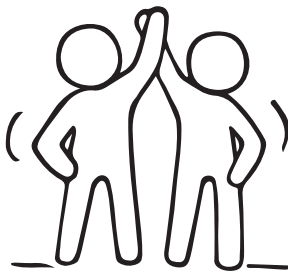
"We want children and families to ultimately live in a community that has what they need without experiencing any barriers ... for everybody to be working so well together that families are getting the resources they need."

– LISA JANSEN THOMPSON,
EXECUTIVE DIRECTOR, ECPAC

What it is ...

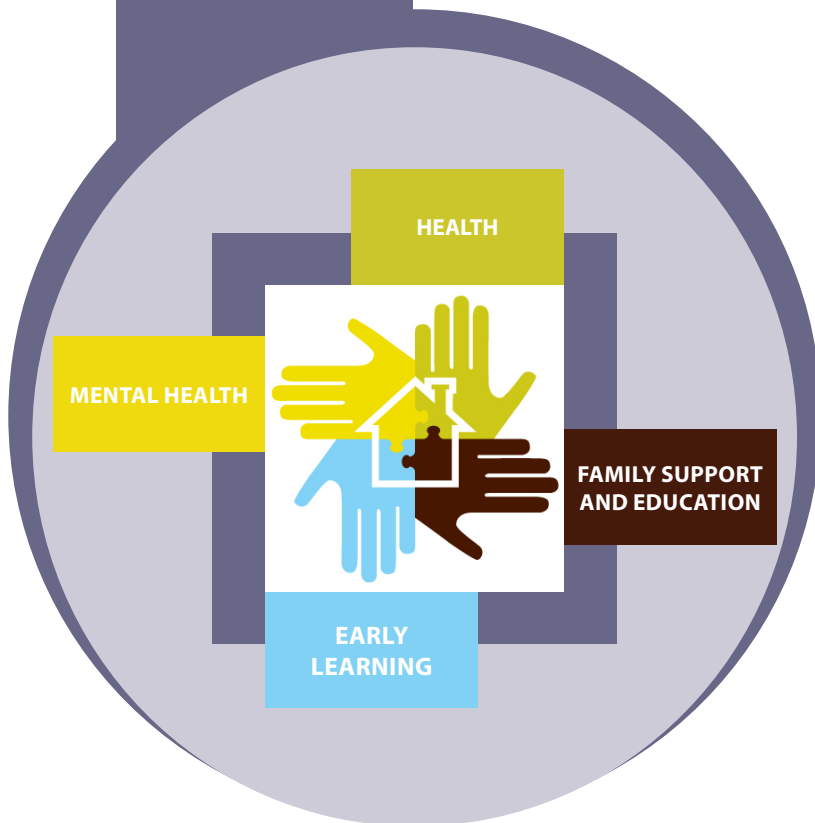
The Early Childhood Partnership of Adams County (ECPAC) provides structure and support to the overall system working to provide children and families with the services they need to be healthy and successful.

ECPAC works with partners to improve the community's capacity to ensure access to high-quality services and supports in the areas of health, mental health, early learning, family support and education, as it strives to enhance outcomes for all children and families in Adams County.



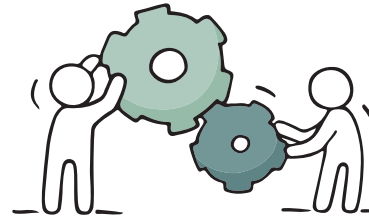
What is involved ...

- Strengthening partnerships between organizations to facilitate seamless service delivery, efficient use of resources and shared accountability for children and family outcomes.
- Cultivating family leadership and engagement in planning, implementing and evaluating efforts.
- Working with partners to identify what works well, what doesn't, where the gaps and barriers are and how to address those identified gaps and barriers.
- Facilitating problem-solving and creativity by introducing outside perspectives and resources.
- Building an environment of trust, transparency, and accountability.
- Encouraging common data collection and outcomes.
- Advocating for the use of best practices and procedures to help ensure the delivery of high-quality services.
- Increasing community awareness about the importance of early childhood in long-term life success.
- With partners, ensuring strong policies and sufficient investments support children and families to thrive.





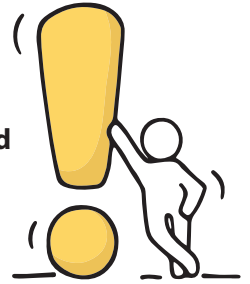
What the numbers show...



100%

of organizational partners note that they **agree or strongly agree** that their organization benefits from ECPAC involvement.

Organizations report that their partnership with ECPAC has resulted in: **Improved services or supports** for young children and families (59%); **Exchanges of resources** (43%); **Improved processes** for screening/referral/follow-up (36%); **Increased organizational capacity** (21%); Development of **new programs** (19%).



What people are saying...



“ECPAC is like a load-bearing wall you can’t be without.

We have a lot of support walls, but definitely the biggest portion of support, connection and partnership comes through ECPAC for us.”

—MICHELLE DALBOTTEN, DIRECTOR, STEP BY STEP CHILD DEVELOPMENT

“Without them... there wouldn’t be someone that would connect us, nor do we have the capacity to do so.”
—Margaret Davis, Early Childhood Mental Health Consultant at Community Reach Center and member of Early Childhood Services Team

“It’s almost like a referral for those who give referrals, making that **web of connections for each other.**”
—Dolores Ramirez, Chief Program and Impact Officer, Growing Home

“When you have a system of care that works together, then fewer kids slip through the cracks and the potential risk for generation-after-generation impact goes down.”
—Jill Atkinson, Clinical Director, Community Reach Center



THE BIG TAKEAWAY



Through strong partnerships, ECPAC is able to facilitate a more effective and efficient system for ensuring that Adams County is a place where young children and their families can thrive.